

CHAMOT

Recombinant IL-6, Human, GMP

CM008-100HPG
CM008-1000HPG



CHAMOT

喬默生物技術(上海)有限公司
CHAMOT BIOTECHNOLOGY CO., LTD.

CONTENT

1 产品简介

2 产品组成

3 产品储存

4 产品使用

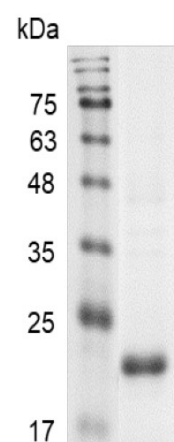
5 产品规范

Recombinant IL-6 (Interleukin-6), Human, GMP

编号:	CM008-100HPG CM008-1000HPG	规格:	100 µg 1 mg
类别:	重组蛋白	应用:	Functional Assay

产品简介

描述: Interleukin-6 (IL-6) is an interleukin that acts as both a pro-inflammatory cytokine and an anti-inflammatory myokine. In humans, it is encoded by the IL6 gene. In addition, osteoblasts secrete IL-6 to stimulate osteoclast formation. Smooth muscle cells in the tunica media of many blood vessels also produce IL-6 as a pro-inflammatory cytokine. IL-6's role as an anti-inflammatory myokine is mediated through its inhibitory effects on TNF-alpha and IL-1, and activation of IL-1RA and IL-10.



来源: *Escherichia coli*.
Animal-free reagent and laboratory.
Manufactured and tested under GMP guideline.

SDS-PAGE analysis of recombinant IL-6, Human, GMP

纯度: >98% as determined by SDS-PAGE analysis.

生物学活性: Measure by its ability to induce proliferation in TF-1 cells. The ED₅₀ for this effect is <0.5ng/mL. The specific activity of recombinant human IL-6 is approximately >5 x 10⁸ IU/mg. Measure by its ability to induce proliferation in MCF-7 cells. The ED₅₀ for this effect is <4.4ng/mL.

内毒素检测: <0.05 EU per 1 µg of the protein by the LAL method.

蛋白序列: MVPPGEDSKDVAAPHRQPLTSSERIDKQIRYIL
DGISALRKETCNKSNMCESSKEALAENNLNLPK



MAEKDGCFFQSGFNEETCLVKIITGLLEFEVYLEYL
QNRFSSEEQARAVQMSTKVLIQFLQKKAKNL
DAITTPDPTTNASLLTKLQAQNQWLQDMTT
HLILRSFKEFLQSSLRALRQM with
polyhistidine tag at the C-terminus.

产品组成

成分: 从含有 1X PBS, pH 8.0 溶液中冻干的蛋白质,
无任何动物源性成分.

产品储存

储存: -20°C冻干粉保存 1 年.
运输: 蓝冰.

产品使用

- 1、开盖前, 建议3000-3500rpm离心5min。
- 2、推荐使用无菌水重悬冻干粉, 溶液浓度不低于500µg/mL, 并室温静置至少20min以充分溶解。勿涡旋剧烈振荡。
- 3、重悬后的溶液, 2-8无菌保存不超过1周。
- 4、如需长期保存, 推荐使用无菌的含载体蛋白 (如0.1%BSA、10%FBS 或5%HSA) 的溶液进一步稀释 (不低于10ug/mL) 后分装保存, -20至-80无菌保存3到6个月。无血清实验需求时, 可更换为 5%海藻糖溶液作为载体。避免反复冻融。

产品规范

CHAMOT GMP recombinant proteins are manufactured in ISO 13485:2016 and GMP certified facility.
The processes include:

- ★Testing and traceability of raw material
- ★Records of the maintenance and equipment calibration
- ★Personnel training records
- ★Batch-to-batch consistency
- ★Documentation of QA control and process changes
- ★Manufactured and tested under an ISO 13485:2016 certified quality management system
- ★Stability monitor of product shelf-life

WB=Western Blot; IP=Immunoprecipitation; IF=Immunofluorescence; IHC=Immunohistochemistry;
FACS=Fluorescence activated Cell Sorting; FA=Functional Assay

CHAMOT Biotechnology (Shanghai) Co., Ltd.

For Research Use Only. Not for use in diagnostic or therapeutic procedures